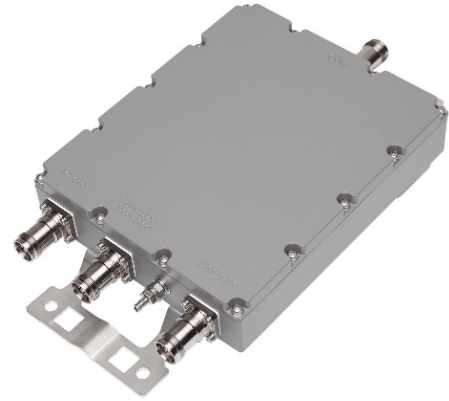


617-960/1695-2200 & 2300-2690/3300-4200 MHz Triplexer

STXS-LMC

Outdoor rated Triplexer for multi-band combining, especially, CBRS/C-Band with commercial bands.

- Triplexer Combiner for 617-960, 1695-2200 & 2300-2690 and 3300-4200 MHz
- Easy integration of CBRS/C-Band combining in the multi-band DAS
- Wall & Pole Mountable
- Low Insertion/High Port Isolation
- Outdoor IP67 & Salt Fog Rated
- Low PIM Rated



Parameter	Specifications		
Model	STXS-LMC		
Input Port Number	Port 1	Port 2	Port 3
Freq. Range [MHz]	617-960	1695-2200 & 2300-2690	3300-4200
Insertion Loss [dB]	0.5		
Return Loss [dB]	18		
Port Isolation [dB]	46		
Power Rating [W]	250 Avg. per Port (3kW Peak)		
Group Delay [ns]	4.4	7.5	6.0
DC Pass & Lightning Protection	3A max @ All Ports, ±5 kA, 8/20us		
PIM [dBc]	-161		
IP Rating	IP67, 30-day Salt Fog IAW ASTM-B117		
Operating Temp. [°F]	-40 to +149		
RF Connector	4.3-10 Female		
Size (W x H x D)	7.09" x 8.62" x 1.73"		
Weight [lb]	7.5		

* Specifications are subject to change without prior notification.

Rev.3

Mechanical Drawing

